

NO PART OF THIS DOCUMENT MAY BE REPRODUCED WITHOUT PRIOR AGREEMENT AND WRITTEN PERMISSION OF
FORD PERFORMANCE PARTS © Ford Motor Company 2020

PRIOR TO INSTALLATION READ THESE INSTRUCTION COMPETELY
For questions, Call the FORD PERFORMANCE Techline 1-800-367-3788

Please visit <https://www.performanceparts.ford.com> for warranty information

OVERVIEW:

The use of a floor hoist is recommended for this installation. If you do not have access to one, use a hydraulic floor jack and jack stands to raise the vehicle.

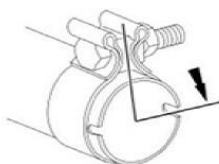
!! CAUTION: JACK STANDS MUST BE USED ON A LEVEL SURFACE AND BE SECURELY SEATED. FAILURE TO DO SO MAY RESULT IN PERSONAL INJURY OR VEHICLE DAMAGE! !

Tools Required

3/8 ratchet	Screwdriver or small pry bar
3/8 ratchet extension	13mm socket
15mm socket	10mm socket
WD40 or similar lubricant	

Kit Includes:

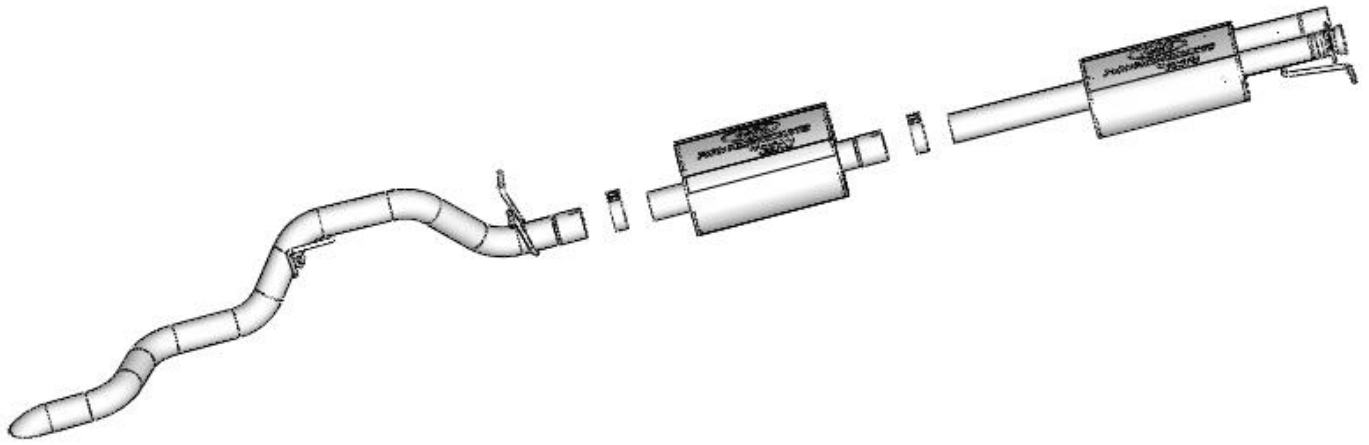
<u>Find No.</u>	<u>Qty:</u>	<u>Description</u>
1	1	Front Muffler Section
2	1	Mid muffler Section
3	1	Tailpipe section
4	2	2.5" clamp
5	1	2.38" clamp



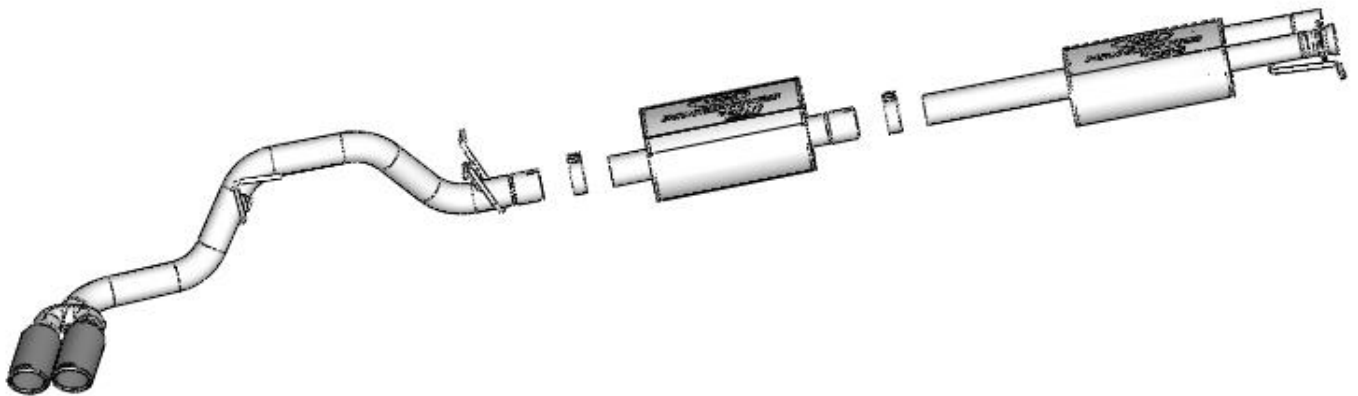
Clamp detail:

- The exhaust clamp should be installed to within a 1/16" of the edge of the expanded and notched pipe.
- The Bolt section should not be over either of the notches, Perpendicular to the notches is preferred.
- Tighten to 48 Nm (35 lb./Ft.)

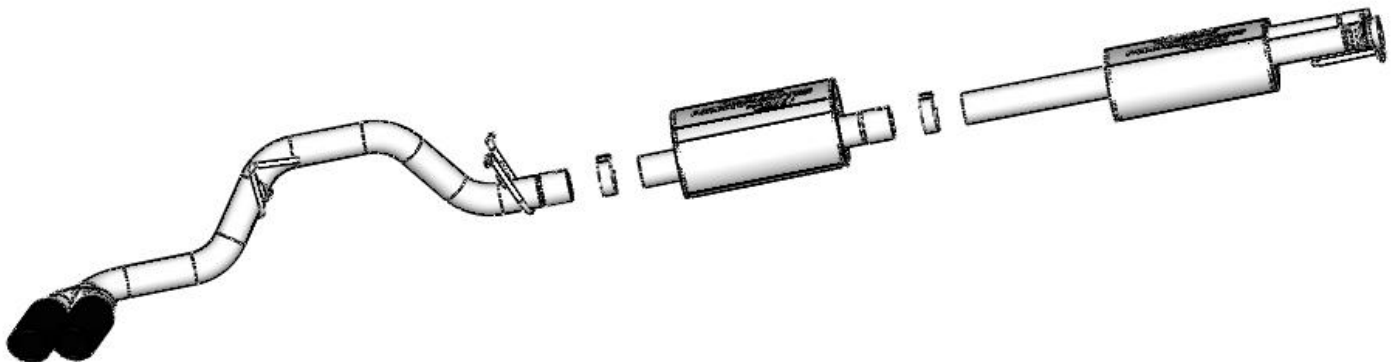
High Clearance M-5200-R7



Chrome dual tips M-5200-R7C

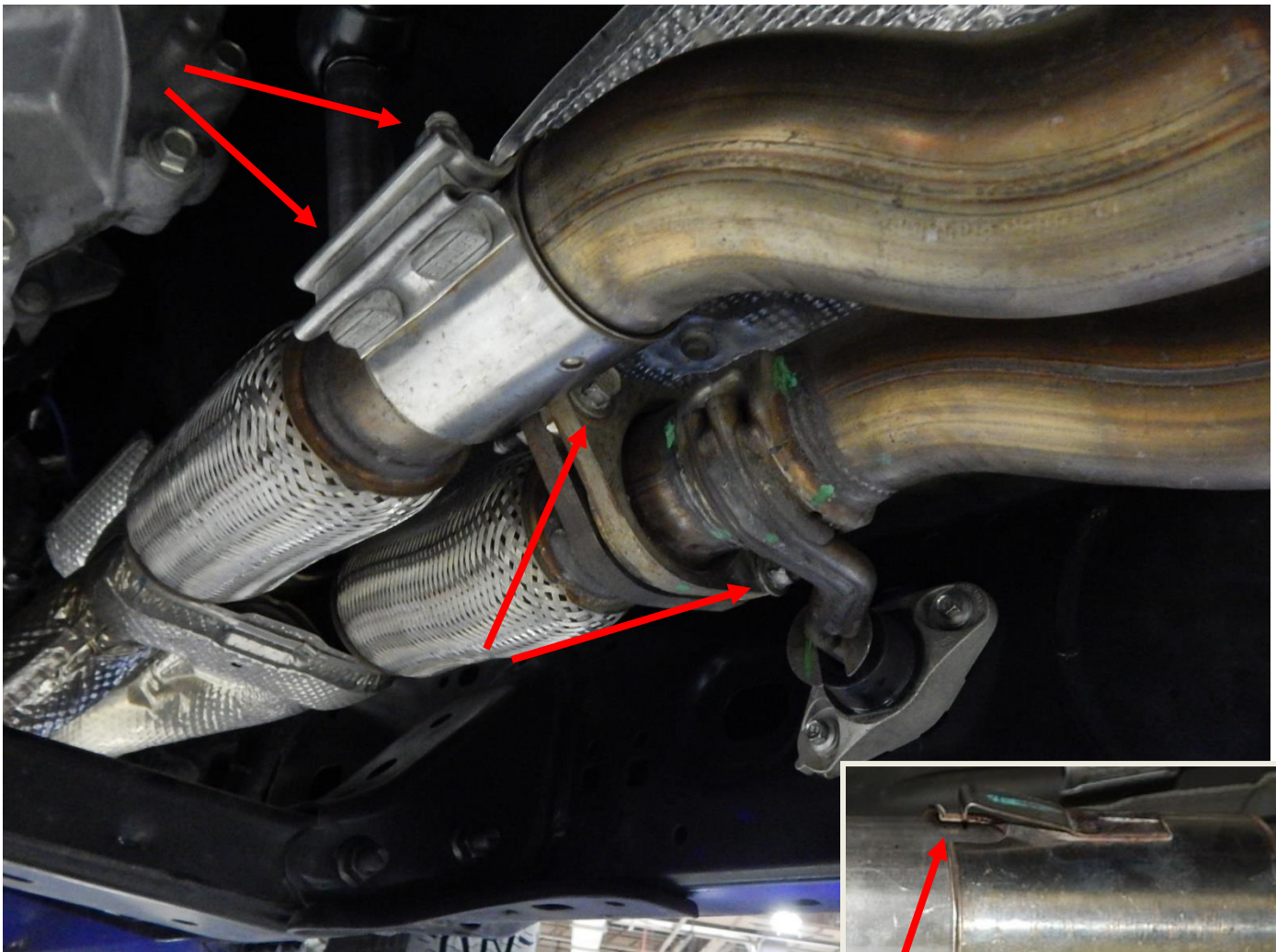


Black dual tips M-5200-R7B

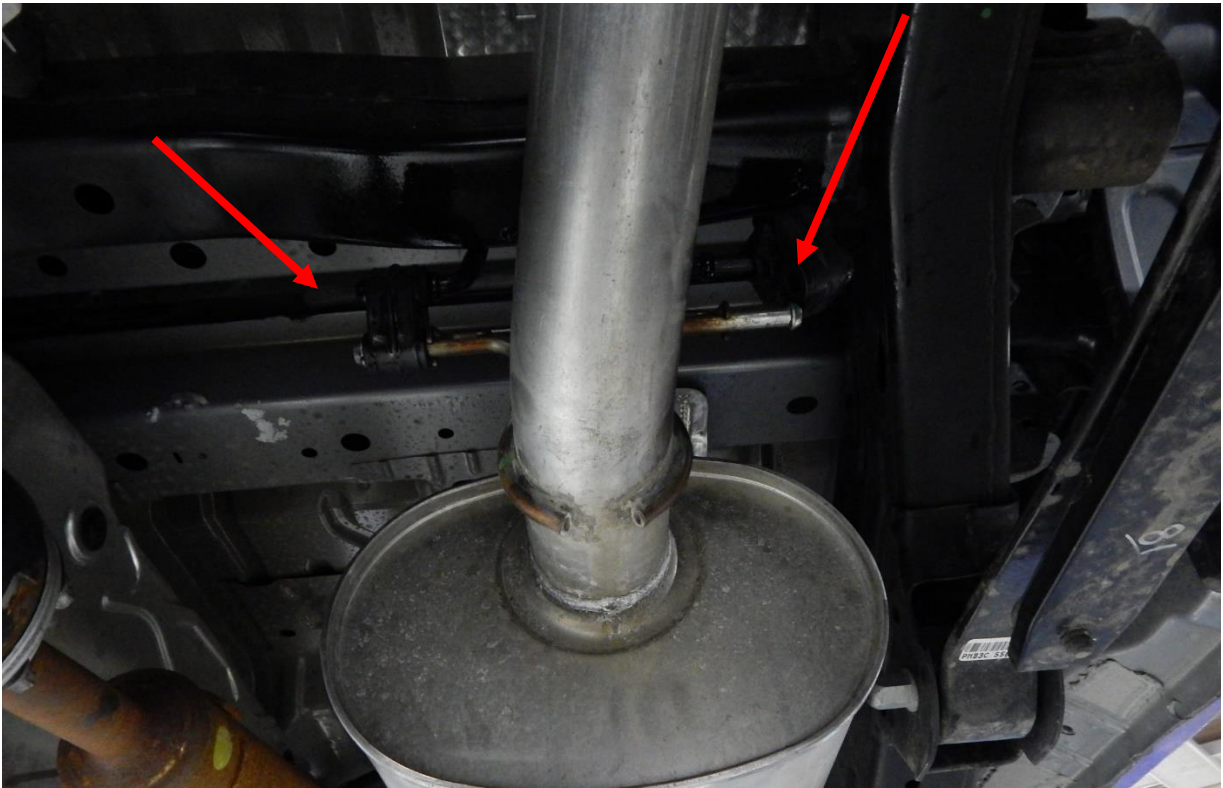


REMOVAL INSTRUCTIONS:

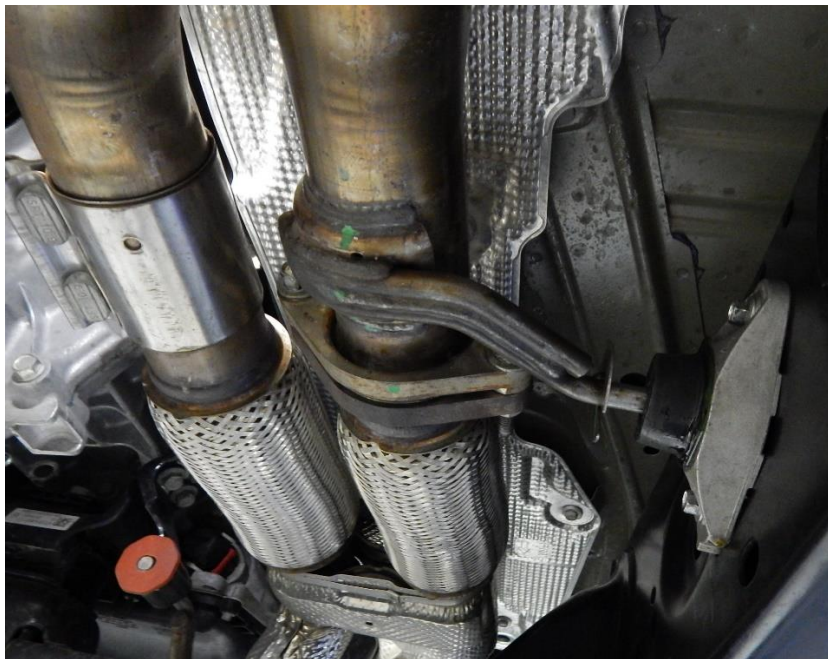
1. With the vehicle in NEUTRAL, position it on a hoist. Apply the emergency brake and chock the wheels.
2. Loosen the 2 bolts on the sleeve clamp and remove the 2 bolts in the flange in front of the muffler. Release the retaining ring on the sleeve clamp and slide rearward. Retain all hardware for installation of the new system.



3. Remove the 2 hangers from the isolators behind the muffler.



4. The system has a clamped joint between the mufflers. It can be removed as a one piece though. Pull slightly rearward to disengage the flare at the flange, then sideways to pull the front hanger out of the isolator.



Factory Ford shop manuals are available from Helm Publications, 1-800-782-4356

5. Slide the system forward to remove the rear hanger from the isolator. Then lower the front of the system while rotating the tailpipe over the rear axle.



Factory Ford shop manuals are available from Helm Publications, 1-800-782-4356



FORD PERFORMANCE

M-5200-R7, M-5200-R7B, M-5200-R7C
Model 2023+
Ranger 2.7L

INSTALLATION INSTRUCTIONS:

Slide the factory sleeve clamp over the driver's side of the muffler inlet pipes. Raise the assembly into position and push the hanger of the front muffler into the isolator on the body. Line up the muffler inlet pipes with the factory exhaust. Slide the sleeve clamp over the factory pipe to help hold in position. Use the 2 factory bolts to assembly the 2 flanges (the flange in the new system rotates). Snug these bolts and the sleeve but do not tighten. A stand will be useful to help hold the assembly up for the next step. Line up the large notch on the sleeve clamp with the locating button on the factory pipe and push on until the button bottoms out.



Factory Ford shop manuals are available from Helm Publications, 1-800-782-4356



FORD PERFORMANCE

M-5200-R7, M-5200-R7B, M-5200-R7C
Model 2023+
Ranger 2.7L

Slide the 2.5" clamp over the muffler outlet. Slide the expanded inlet of the mid muffler over the muffler outlet. DO NOT tighten the clamp. Move the muffler stand to the muffler just assembled. Slide another 2.5" clamp onto the outlet of this muffler.



Factory Ford shop manuals are available from Helm Publications, 1-800-782-4356

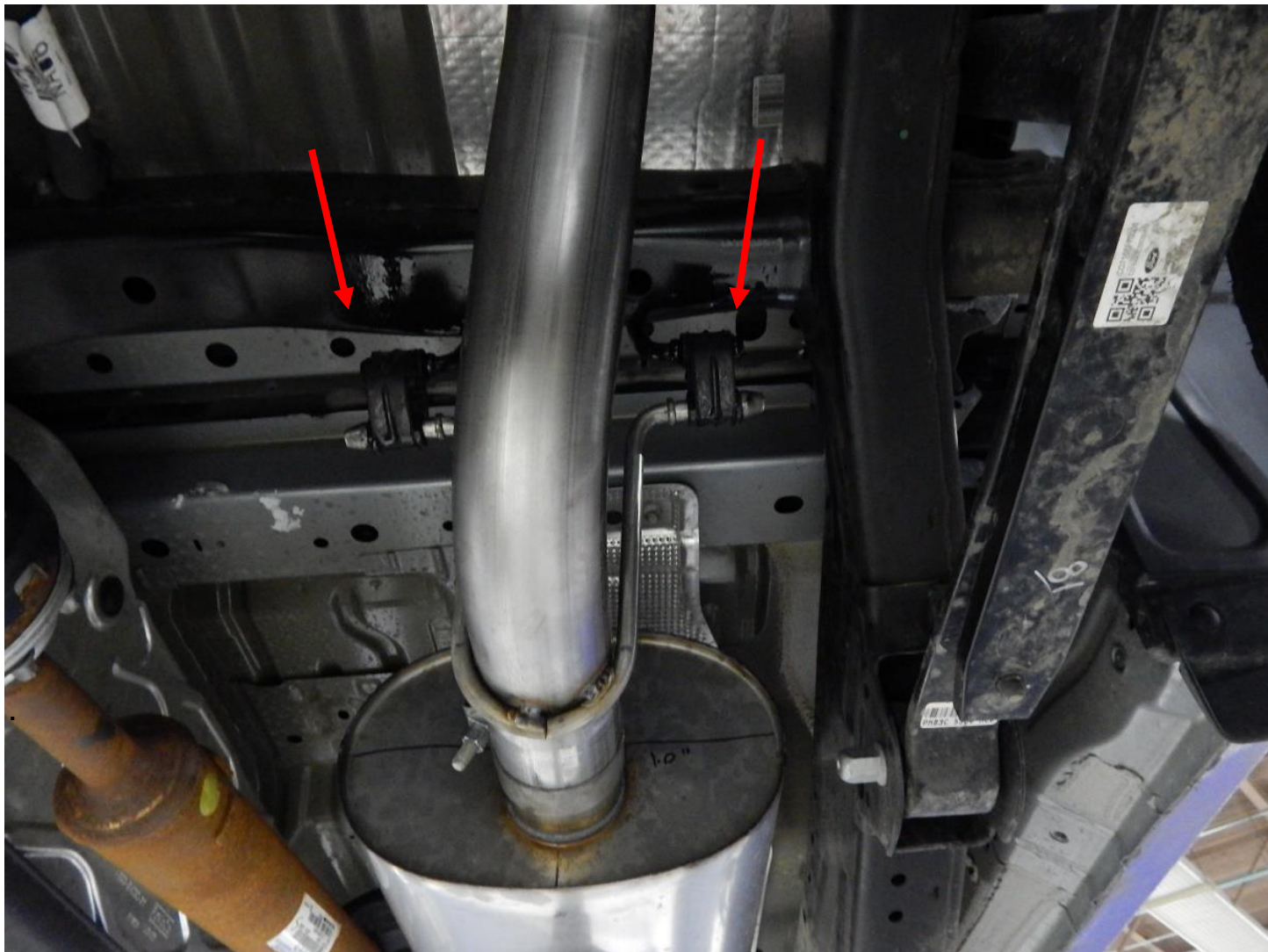
Remove the 2 bolts holding the rear isolator to the frame. Retain hardware.



Work the tailpipe over the rear axle, and slide the expanded inlet of the tailpipe over the muffler outlet.



Slide the hangers at the front of the tailpipe into the isolators



Slide the isolator removed from the frame over the rearmost hanger (note orientation) and reattach to the frame. Slide the clamp over the



Position the tips to have at least a 13mm gap to the fender, and 25mm inboard of the most outward feature of the truck above the tips.



Greater than
25mm

Using a 15mm socket begin tightening the exhaust clamps, starting with the tailpipe first. Make sure the bolts of the clamps are not over the notches in the pipes. Also consider ground clearance when locating the clamp bolts. Once you are satisfied with your fitment torque all clamps to 48nm. (35 lb-ft).

Check the exhaust for clearance to all hoses and wiring. Start the vehicle and listen for leaks. Adjust/tighten clamps as necessary.



NOTE: When you first start your vehicle after the installation of your new Ford Performance Exhaust System, there may be some smoke and fumes coming from the system. This is a protective water based coating used in the manufacturing of mandrel bent performance exhaust tubing. This is not a problem and will disappear within a very short period of time after the exhaust has reached normal operating temperatures.



FORD PERFORMANCE

M-5200-R7, M-5200-R7B, M-5200-R7C
Model 2023+
Ranger 2.7L

For the high clearance, assembly is the same but there are no tips to align. Check the clearances to the hoses, wiring, and trailer hitch if applicable.



Factory Ford shop manuals are available from Helm Publications, 1-800-782-4356